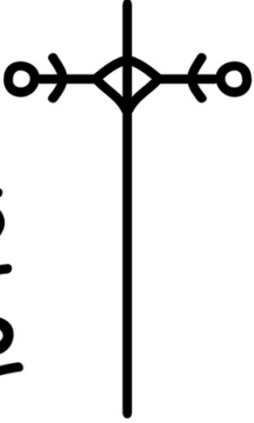
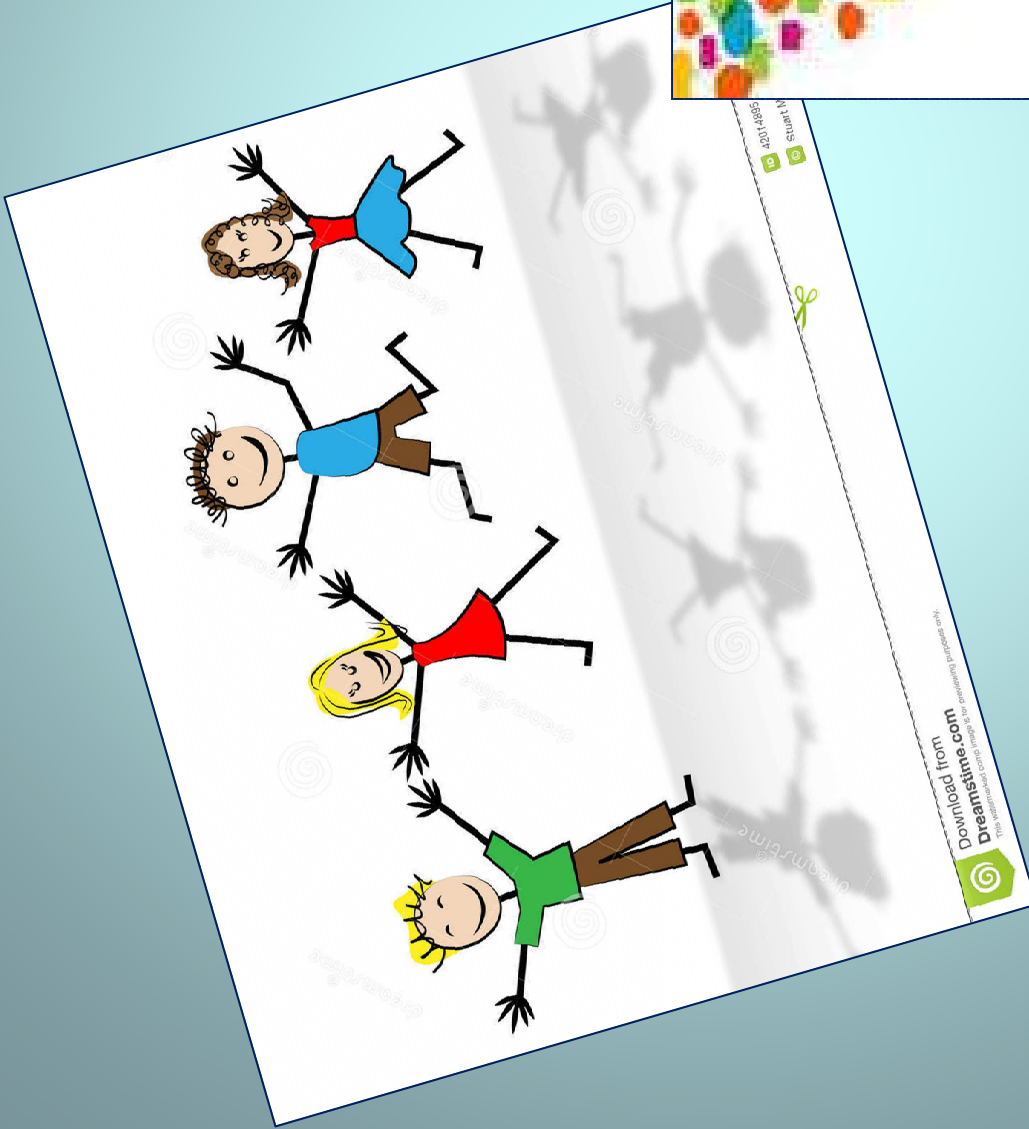


Take time
to reflect



Stop for a minute



Bleak Hill Values

Are values getting lost
in a busy, competitive
and technological
world?

We all play a hugely influential role in the lives of children and we must give the children the right messages.

Positive values:

- Improves self-esteem and confidence;
- Create a better atmosphere and environment for all;
- Encourage children to become more aware of their behaviour;
- Have a positive impact upon behaviour;
- Teach children to value themselves, each other and their environment;
- Supports the development of the whole child;
- Allow children to discover the best of themselves;
- Prepares children to become valued citizens in the real world.

Many of the values are already in place.
Do the children know what they really mean?

A year of Bleak Hill Values ensures these values are more explicit. The children become more aware of their own behaviour.

Making these values have a high profile helps embed them into every day life.

Bleak Hill values link with the promotion of British Values.

Our values are important to all children, staff, parents and governors.

These values make the school community happy and harmonious where children feel secure.

September	Friendship and Appreciation
October	Patience and Thoughtfulness
November	Compassion and Charity
December	Hope and Courage
January	Positivity and Inspired by the success of others
February	Unity and Collaboration
March	Respect and Responsibility
April	Tolerance and Forgiveness
May	Resilience and Perseverance
June	Honesty and Trust
July	Justice and Democracy

A school year of values

The whole staff team and all children are involved in promoting values and recognising their positive effects around school.

We aim to:

- Develop children's understanding of what values are and why they are important in life.
- Encourage children to refer to the school's shared values when making choices.
- Use the values of the school when solving conflict situations.
- Exemplify the school's shared values in our own choices.
- Share these values in such a way as they embrace with our promotion of British Values
- Display and share our school values and encourage all visitors to take account of them in their time in the school.
- Encourage parents to support the school's values by promoting the 'value of the month'.
- Promote positive behaviour choices by developing strong values within the pupils at the school.

How we do it

- Our Values approach consists of a set of 11 values.
- Each month a new value is introduced in each class, and the full set of values is displayed in each classroom.
- Further understanding of the value in the context of the school and the wider community is explored and celebrated through assemblies and through the value being promoted by all staff in every aspect of school life.
- Assembly themes will be predominantly values based.
- Circle time and PHSE lessons will be further opportunities to discuss and promote values within each classroom with informal opportunities being utilised whenever possible; for example, playtime.
- Our Values are shared and displayed on notice boards, on a whole school display and within each classroom. They are also visible on the school website .
- Our promotion of British Values will make reference to and dovetail with Our Values

Stop for a minute

